

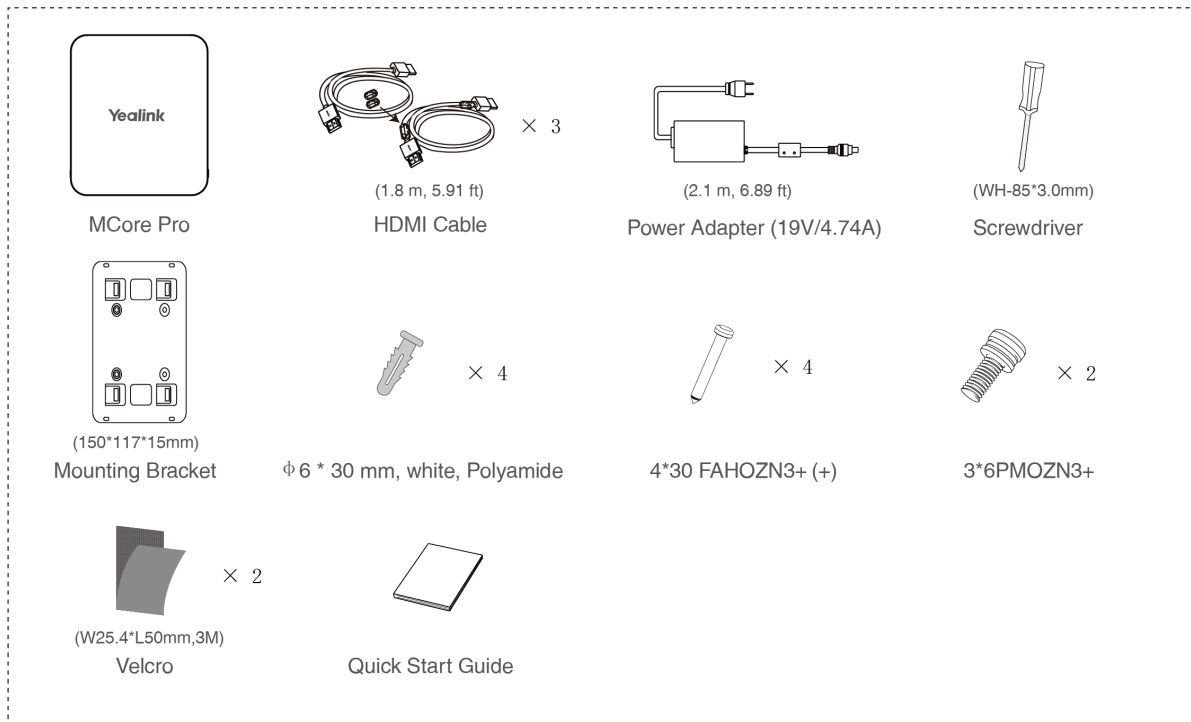
# MVC S60-C5-000

For the installation video, please refer to [MVCS60 Unboxing](#).

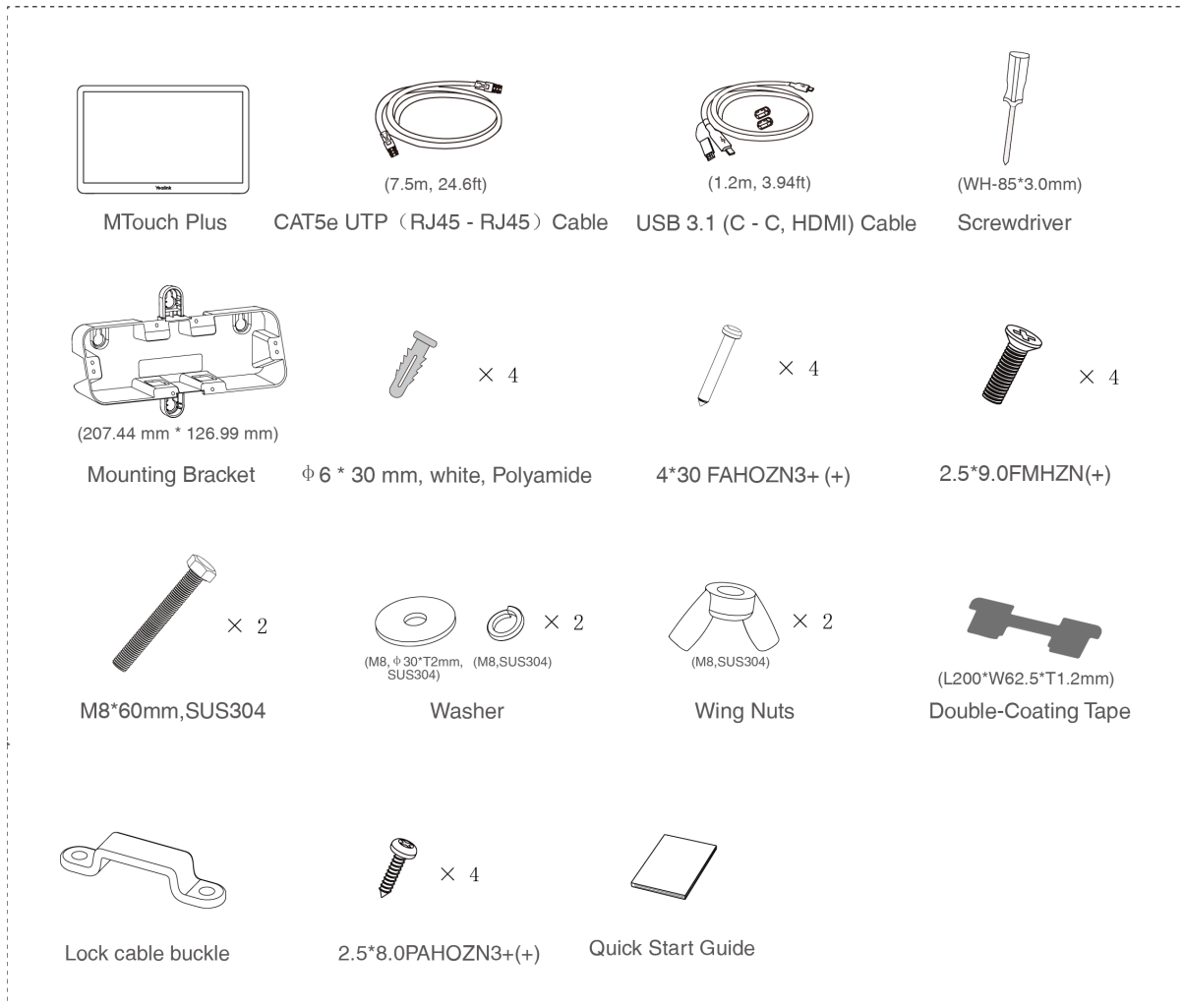
## Requirements

- A display connected to MCore Pro (not included).
- A Microsoft Teams Rooms or Skype® for Business account (not included).
- Wired network environment (not included).

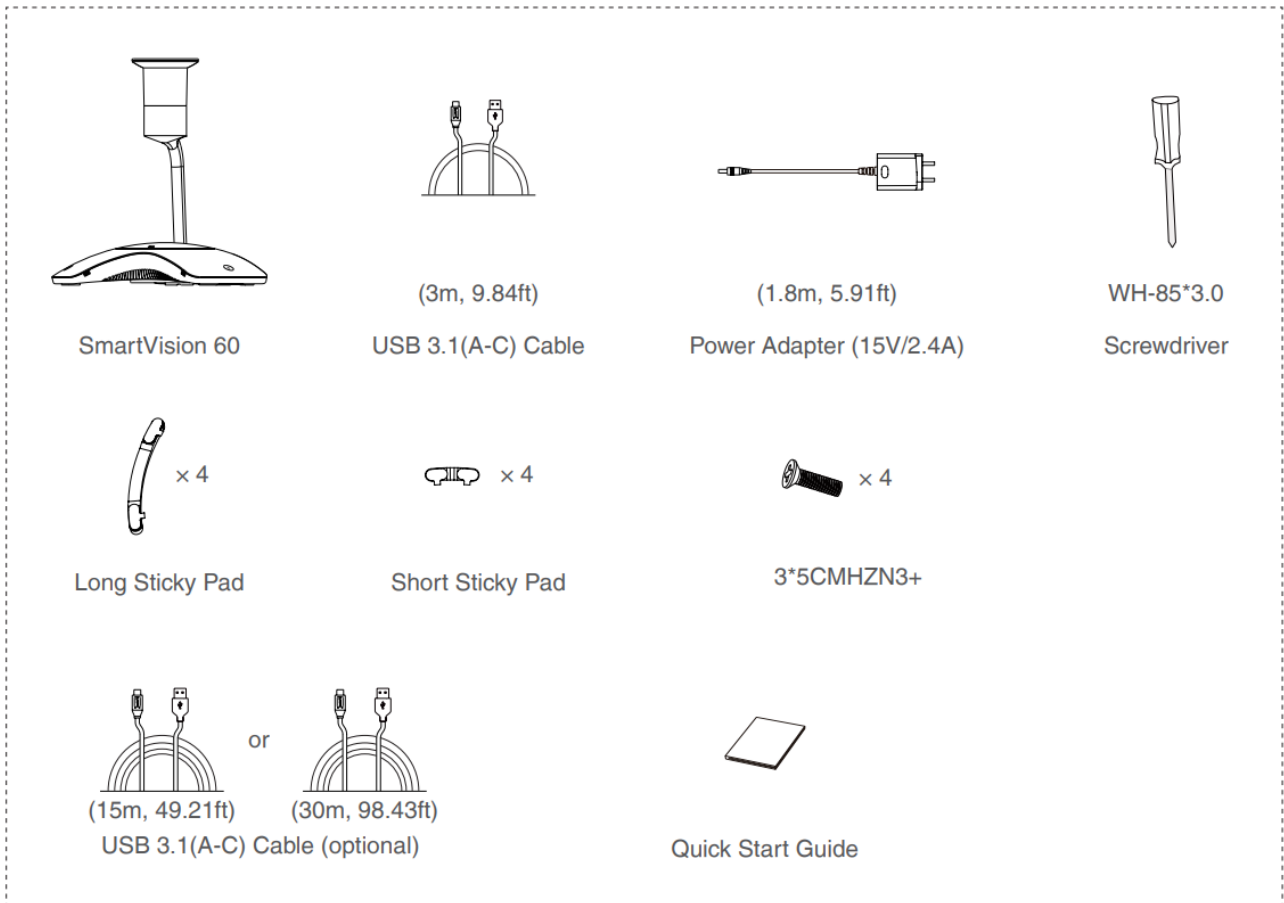
## Package Contents



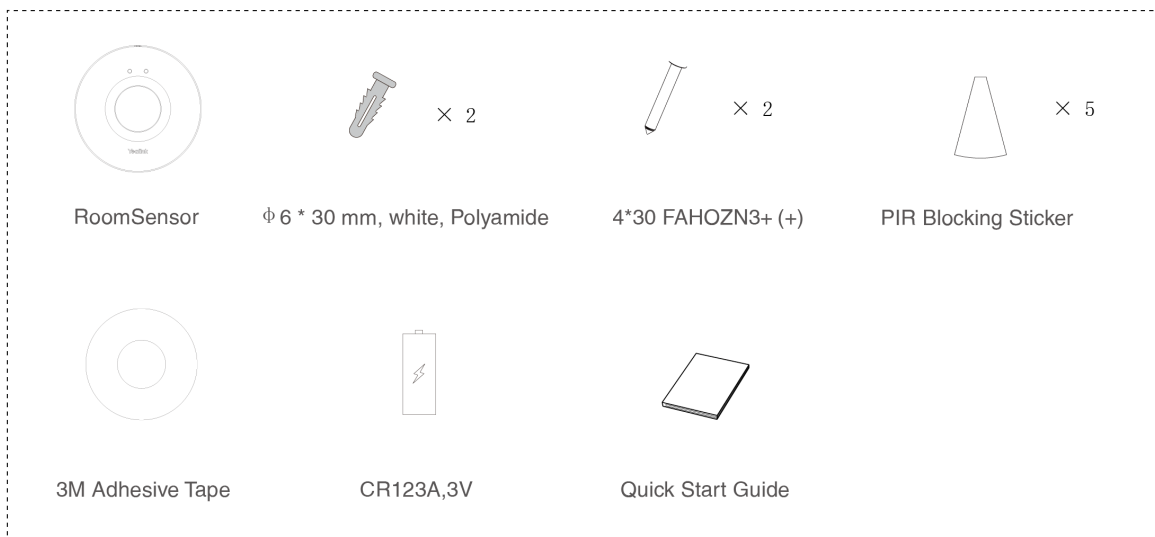
## MCore Pro Package



## MTouch Plus Package



## SmartVision 60

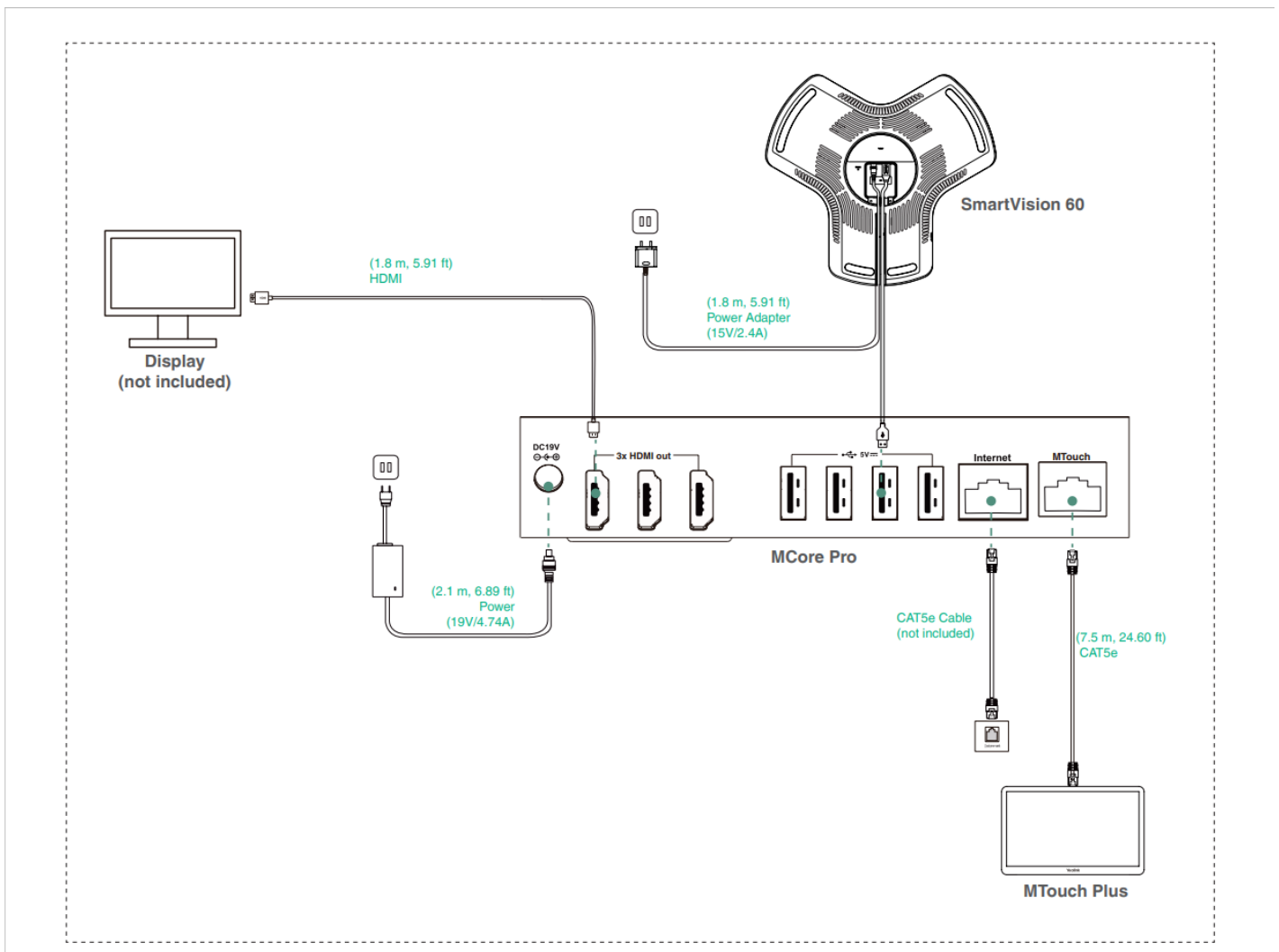


## RoomSensor Package

### Install MVC S60-C5-000

- **MCore Pro** supports: wall mounting, TV mounting, or placing on a table.
- **MTouch Plus** supports: placing on a table, sticking on a table, or wall mounting.
- **SmartVision 60** supports: placing or sticking on a table.
- **RoomSensor** supports: ceiling or wall mounting.
- Install and deploy the accessories according to the environment and specific needs. For detailed installation and deployment instructions, please refer to the quick start guide for each product.

### Connect MVC S60-C5-000



**NOTE**

- When starting the system for the first time, you need to connect a mouse to complete the initial configuration. We recommend using a wireless mouse and keyboard kit.
- The maximum cable connection distance from MCore Pro to the MTouch Plus/E2 is 40m/131ft and cannot be extended.
- **Not included accessories:**
  - **Display:** Must have a resolution of 1080p or higher and an HDMI port.
  - **PC:** Must be equipped with an HDMI or USB-C port (supporting DP protocol).
  - **Ethernet cable:** CAT5e or higher.
  - **HDMI cable:** Standard HDMI cable.
  - **PoE switch:** Required if using PoE to connect speakers or cameras (PoE+ required).
- A **USB-C cable** with DisplayPort standard is recommended for MTouch Plus/E2 content sharing. The original content share cable in the MVC kits can also be purchased separately.

## Supported Accessories

For the compatible devices and the maximum number of compatible devices, please refer to [Teams Room Accessories Compatibility Lists](#).

## Initial Setup

When the hardware deployment and connections are completed, you need to set up your Microsoft Teams Room System (MVC) system. Please refer to [Quick Setup](#) for more details.

## Features

### Pair with a RoomSensor/RoomSensor Pro

1. [Switch the account from Skype to Admin](#) .
2. Open Yealink RoomConnect Software.
3. Go to **MTouch Plus > Device Status > Sensor**.
4. Select **Add** and follow the on-screen instructions to pair.

**NOTE**

- An MTouch Plus can be paired with only one RoomSensor/RoomSensor Pro.
- The distance between the MTouch Plus and RoomSensor/RoomSensor Pro must be within 20m.