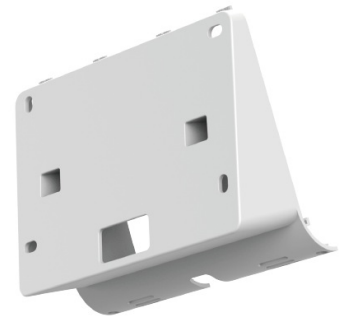


RoomPanel Plus Mount Kits

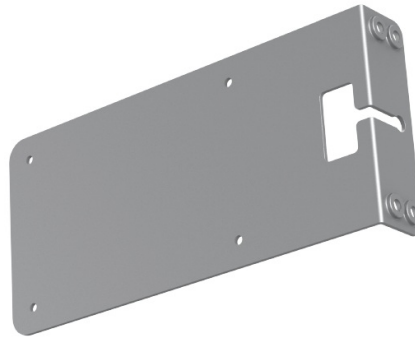
Introduction



0° Mounting Bracket



20° Mounting Bracket



Mullion Mount Bracket

The RoomPanel Plus Mount Kits are respectively used for deployment:

1. 0° Mounting Bracket: mount the RoomPanel Plus vertically on the wall
2. 20° Mounting Bracket: the RoomPanel Plus is mounted on the wall at an angle of 20°
3. Mullion Mount Bracket: mount the RoomPanel Plus vertically on the door frame

Specification

Parameter	Description
-----------	-------------

Physical Feature	<p>0° Mounting Bracket:</p> <ul style="list-style-type: none">- Dimension (W*D*H): 136*116*22 mm- Carton Meas: 405*315*245mm- N.W/CTN: 6.55kg- G.W/CTN: 7.14kg <p>20° Mounting Bracket:</p> <ul style="list-style-type: none">- Dimension (W*D*H): 136*116*62 mm <p>Mullion Mount Bracket:</p> <ul style="list-style-type: none">- Dimension (W*D*H): 200*93*28.5 mm
------------------	---

Device Compatibility

The Mount Kits supported by the device are as follows:

Device Name	Mount Kits
RoomPanel Plus	√

How to Use

refer to [RoomPanel Plus Deployment and Connection](#).